



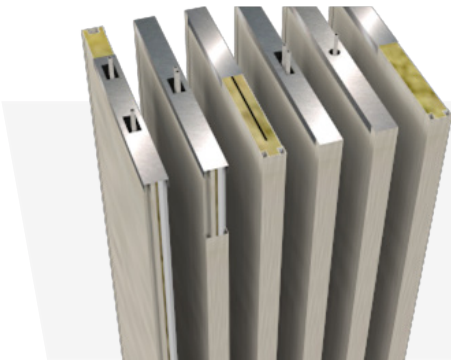
ITANOVIN
INDUSTRIAL ENGINEERING & SOLUTIONS

**B-15 CLASS PANELS,
DOORS, CEILINGS C' CLASS
PANELS AND CEILINGS
USPH PANELS
AND CEILINGS**



STEEL PANELS

ITANOVIN PANELS (SANDWICH type) are made of galvanized steel plates and/or PVC and/or stainless steel and Rock Wool, which can faultlessly fit together, forming the most qualified protection against fire. They can also provide a high standard noise insulation.



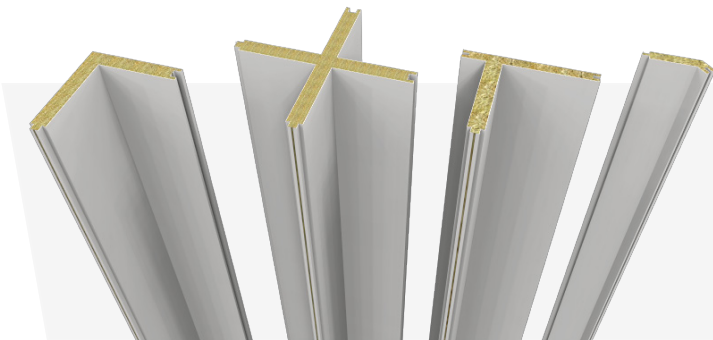
B-15 PANELS 50MM *Special features for cables and sound insulation*

The wall panels are sandwich type steel foils/rock wool, B15 rated class (according to IMO Res. A 754(18)), thickness 50 mm, hidden connecting system. High noise reduction (44 dB). Installation by means of "C shaped" bars (bars have to be fixed to upper and lower deck). Finishing: PVC pre-coated foils – Rough galvanized steel foils – Varnished steel foils (RAL) – Stainless steel foils.

PANELS B-15 (34MM/50MM – C' CLASS 25MM) *Profiles for support and decoration*

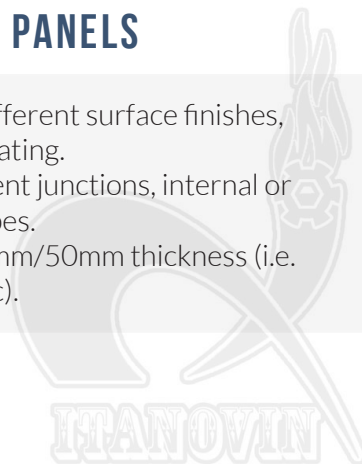
Panels B-15 Class (34mm/50mm – C' Class 25mm) and "U" profiles (both galvanized and PVC).

Features: quick dismantling of any single panel without any special tool; cover clip profile : 14 mm wide; purpose for bulkhead lining; standard height : 2200 mm; for use with standard mounting profiles (upper & lower profile)



SPECIAL TYPES OF B-15 PANELS

Rock wool panel is available in different surface finishes, like polyester painting or PVC coating. Every panel type can have different junctions, internal or external, and different profile types. Special types of B-15 panels, 34mm/50mm thickness (i.e. angles, "T" shapes, "+" shapes, etc).



ITANOVIN.INC
Industrial Engineering & Solutions
TIN: 36-4839487
www.itanovin.com

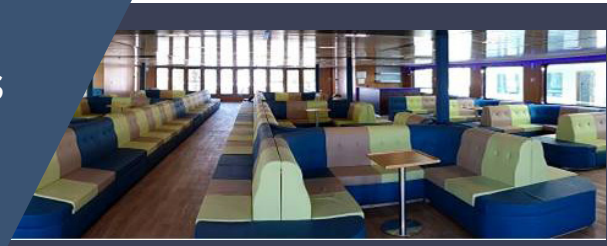
USA - ITANOVIN.INC
Address: 150 S.E 2 AVE, SUITE 1010
MIAMI, FL 33131
TIN: 36-4839487
Mob: +1 (747) 252 9194
Mail: itanovin.inc@yahoo.com

ITALY - NORI GROUP S.R.L.
Address: Piazza Matteotti 2/11 B
CAP 16121 GENOVA
P.Iva: 02536590991
Mob: +39 3456675772
Mail: itanovin.inc@yahoo.com



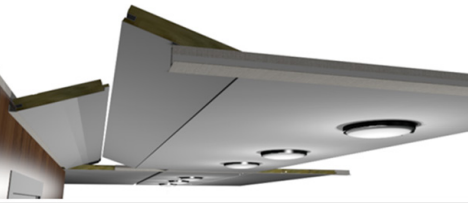
ITANOVIN
INDUSTRIAL ENGINEERING & SOLUTIONS

**B-15 CLASS PANELS,
DOORS, CEILINGS C' CLASS
PANELS AND CEILINGS
USPH PANELS
AND CEILINGS**



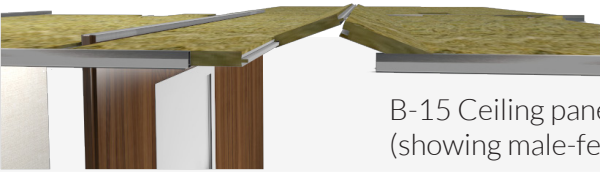
CEILINGS

The **ITANOVIN Ceiling Panels Class B-15** are pre-cut according to customer given dimensions and installed on the Top "L" profiles & connection between ceilings, together with "T" profiles (where needed).

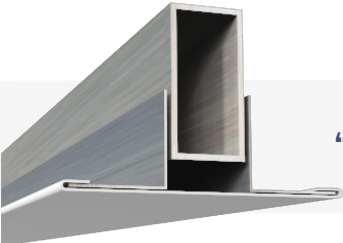


B-15 CEILING PANELS 45MM

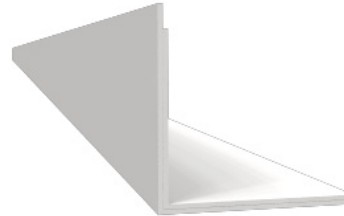
B-15 Ceiling panels 45mm thickness ("T" profile is shown as well).
C-Class Ceiling panels with or without mineral wool inside as well.



B-15 Ceiling panels 45mm thick
(showing male-female junction)



"T" PROFILE



"L" PROFILE

FIRE RESISTING DOORS B-15 CLASS

Door leaf skin plate: **dip hot galvanized sheet PVC coated on both sides**. Door frame: Galvanized steel sheet, electrostatically (powder) painted. Lockcase: Stainless steel, Master Key system. Hinges: Stainless steel
Bathroom locks feature an "Occupied/Vacant" index.



B-15 Door with self-closing device and Inspection Door (inspection door can be used in bulkheads, ceilings etc).



ITANOVIN.INC

Industrial Engineering & Solutions
TIN: 36-4839487
www.itanovin.com

USA - ITANOVIN.INC

Address: 150 S.E 2 AVE, SUITE 1010
MIAMI, FL 33131
TIN: 36-4839487
Mob: +1 (747) 252 9194
Mail: itanovin.inc@yahoo.com

ITALY - NORI GROUP S.R.L.

Address: Piazza Matteotti 2/11 B
CAP 16121 GENOVA
P.Iva: 02536590991
Mob: +39 3456675772
Mail: itanovin.inc@yahoo.com



START FROM SCRATCH



OTHER WORKS - FEATURES



Stainless Steel Recess Door at the Galley area



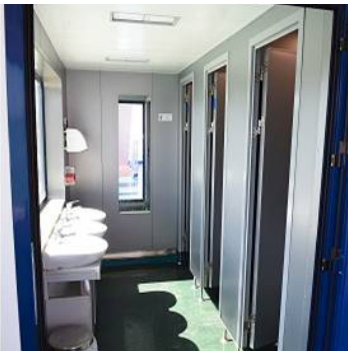
Stainless steel pillar



USPH Stainless Steel Panels and Ceilings



Cruise vessel cabin interior



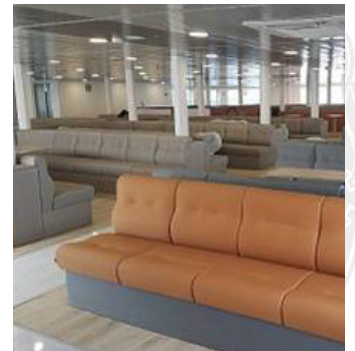
Ferry Boat bathroom area



Ferry Boat bridge area



Ferry Boat passengers area



Interior area



We deeply appreciate your time to view this presentation
and look forward to hearing from you soon!



ITANOVIN
INDUSTRIAL ENGINEERING & SOLUTIONS

CERTIFICATES



LLOYD'S REGISTER CERTIFICATES (MED – Wheel Mark)

Fire resisting Steel Panel B-15 / 34mm
Fire resisting Steel Panel B-15 / 50mm
Fire resisting Door B-15
Fire resisting Ceiling B-15/A-30



ISO 9001 CERTIFICATE

quality system features an ISO 9001:2015 certificate for design, manufacturing and installation of fire retardant materials such as panels, doors, ceilings, etc. for marine and land usage

ITANOVIN INC

Industrial Engineering & Solutions
TIN: 36-4839487
www.itanovin.com

BRANCH 1. USA

Address: 150 S.E 2 AVE, SUITE 1010
MIAMI, FL 33131
TIN: 36-4839487
Mob: +1 (747) 252 9194
Mail: itanovin.inc@yahoo.com

BRANCH 2. ITALY

Address: Piazza Mateotti 2/11B
CAP 16121 GENOVA
P.Iva: 02278920992
Mob: +39 3456675772
Mail: itanovin.inc@yahoo.com